

# Rough Sleeping: what's faith got to do with it?



Jon Kuhrt - Specialist Adviser, Faith and Community Groups



Ministry of Housing,  
Communities &  
Local Government

**Which of the following organisations was NOT set up by a church or church Minister?**

- a) Emmaus
- b) Centrepoint
- c) St Mungo's
- d) Shelter

# YMCA

# Shelter

**centre point** give homeless young people a future

# CHURCH ARMY

**.ORG**



Housing Justice

**The Connection**  
at St Martin-in-the-Fields  
helping homeless people seven days a week

 **emmaus**

 **Church Homeless Trust**

  
**GREEN PASTURES**  
HOUSING THE HOMELESS  
WITHOUT *discrimination* OR *favour*

  
**OASIS COMMUNITY HOUSING**

**SCT** Putting lives back together since 1965

  
St George's Crypt

 **WLM**  
Transforming lives since 1887

 **New Hope**  
PREVENTING HOMELESSNESS. TRANSFORMING LIVES.



**HOPE into ACTION**  
Enabling churches to house the homeless



**Muslim Hands**

**NISHKAM SWAT**  
SIKH WELFARE & AWARENESS TEAM

**THE PASSAGE**  
to ending homelessness

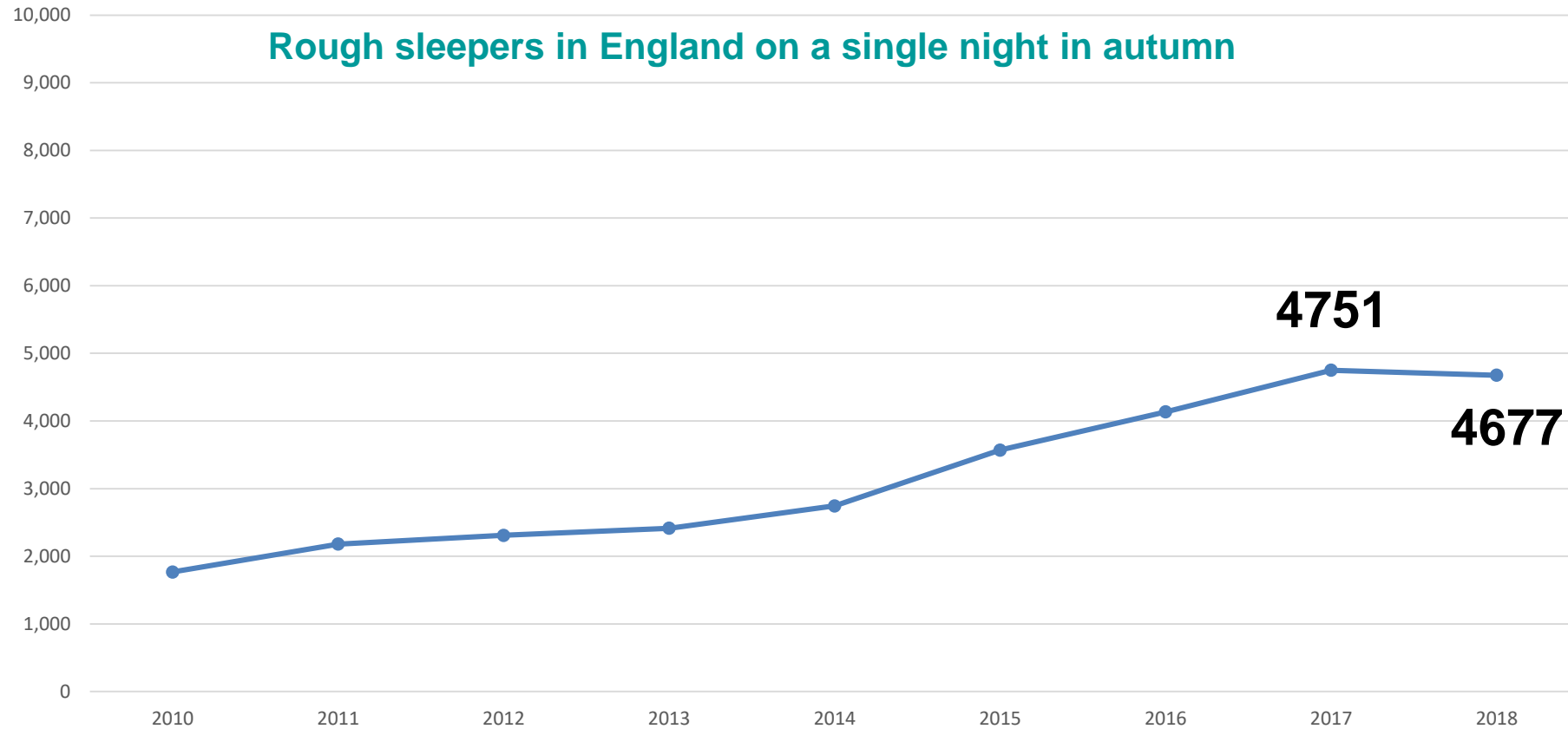
**GLASSDOOR**  
Homeless support in West London churches

# Starting off points...

1. The significant *historic* role of faith in addressing homelessness
2. The scope and range of *current* faith-based work
3. Their *deep motivations and rationale* for engagement
4. Their highly *variable* relationships with Local Authorities



## Rough Sleeping Statistics *The scale of the problem*



The number of people sleeping rough on a single night in autumn had increased annually from 2010 until 2018. In 2018 there was a fall of 2% , which was most pronounced in Rough Sleeping Initiative areas where an average decrease of 19% was observed.



# Rough Sleeping Strategy *Our vision*

To achieve our vision of a country where no one needs to sleep rough by 2027 we need to go further, through a cross-government rough sleeping strategy

**PREVENT**

**INTERVENE**

**RECOVER**

- Ambitious package with £100 million over the next two years;
- Built around three core pillars:
  - preventing rough sleeping before it happens,
  - intervening at crisis points, and
  - helping people to recover with flexible support that meets their needs.
- Includes a shift to a rapid rehousing approach for people at crisis points to be supported into homes, appropriate to their needs.

# Summary

- 1) Organisational humility
- 2) Maintain a holistic perspective
- 3) Focus on recovery
- 4) Avoid naivety (grace and truth)
- 5) The relevance of faith and spirituality



# 1. Organisational humility

*‘No one comes off the streets due to the work of just one organisation’*



# Relationship with Local Authority

Complement Collaborate

Communicate

Commission

Contrast

Co-option

Conflict

Control

**Faith / Community  
responses to homelessness**



Ministry of Housing,  
Communities &



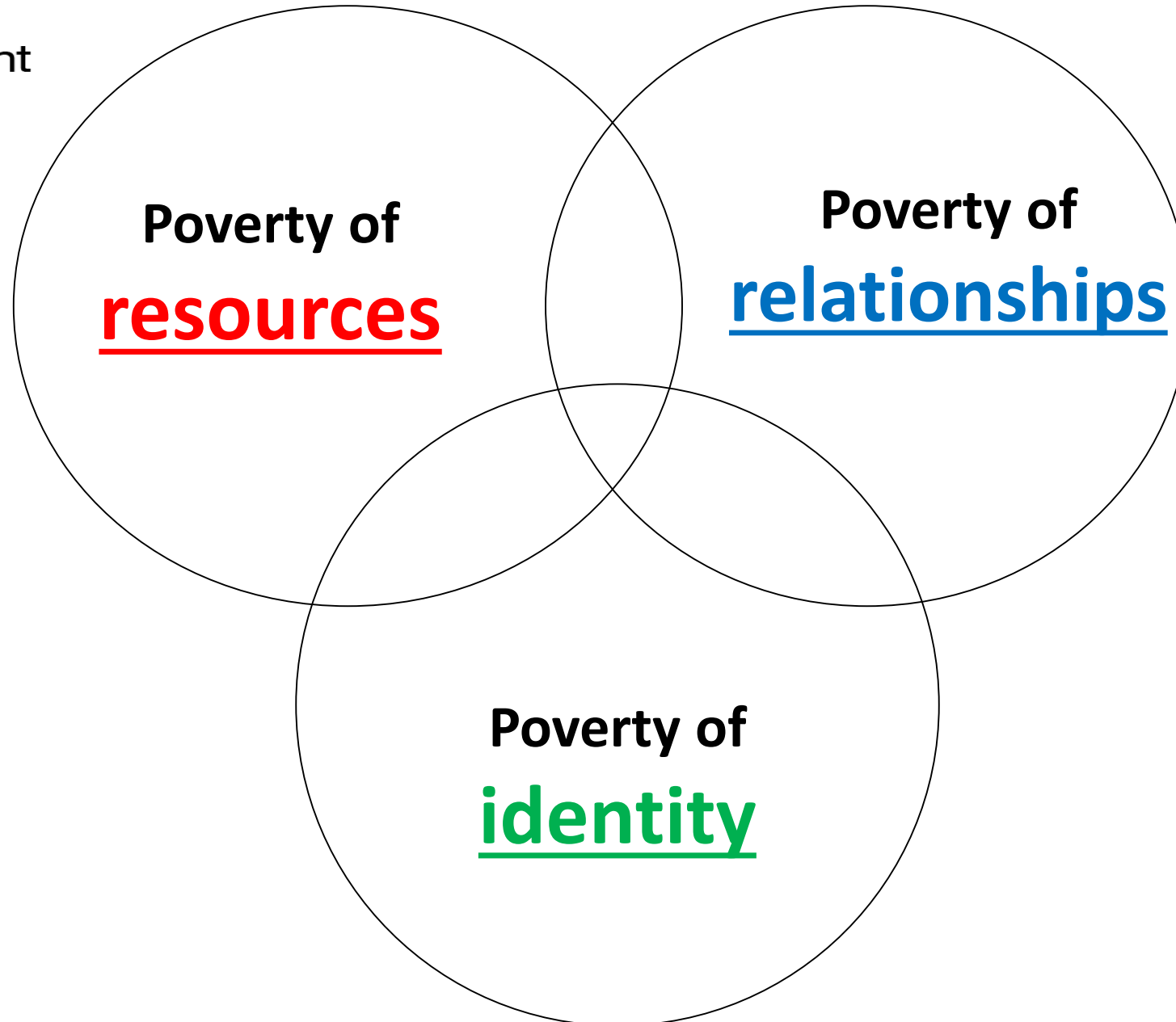
Ministry of Housing,  
Communities &  
Local Government

## 2. Maintain a holistic perspective

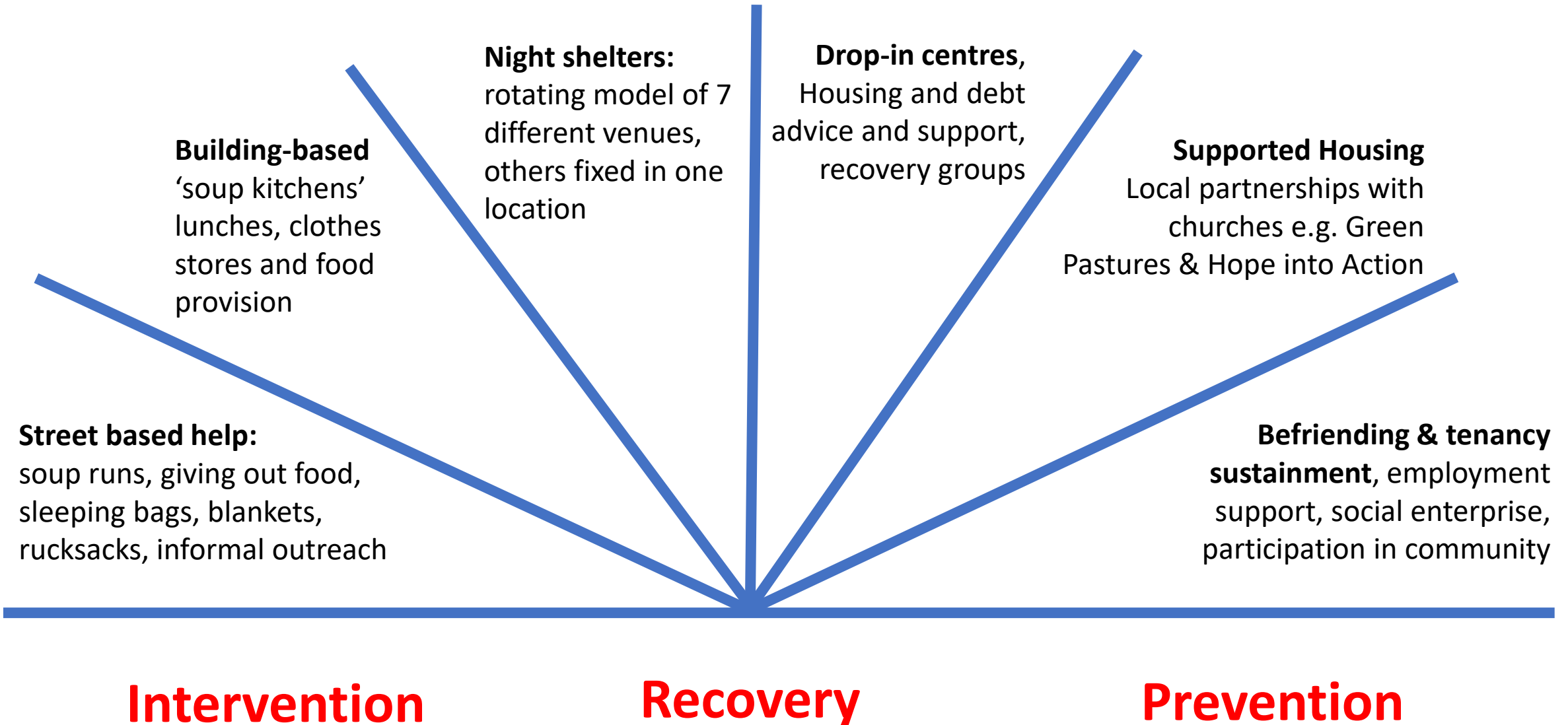




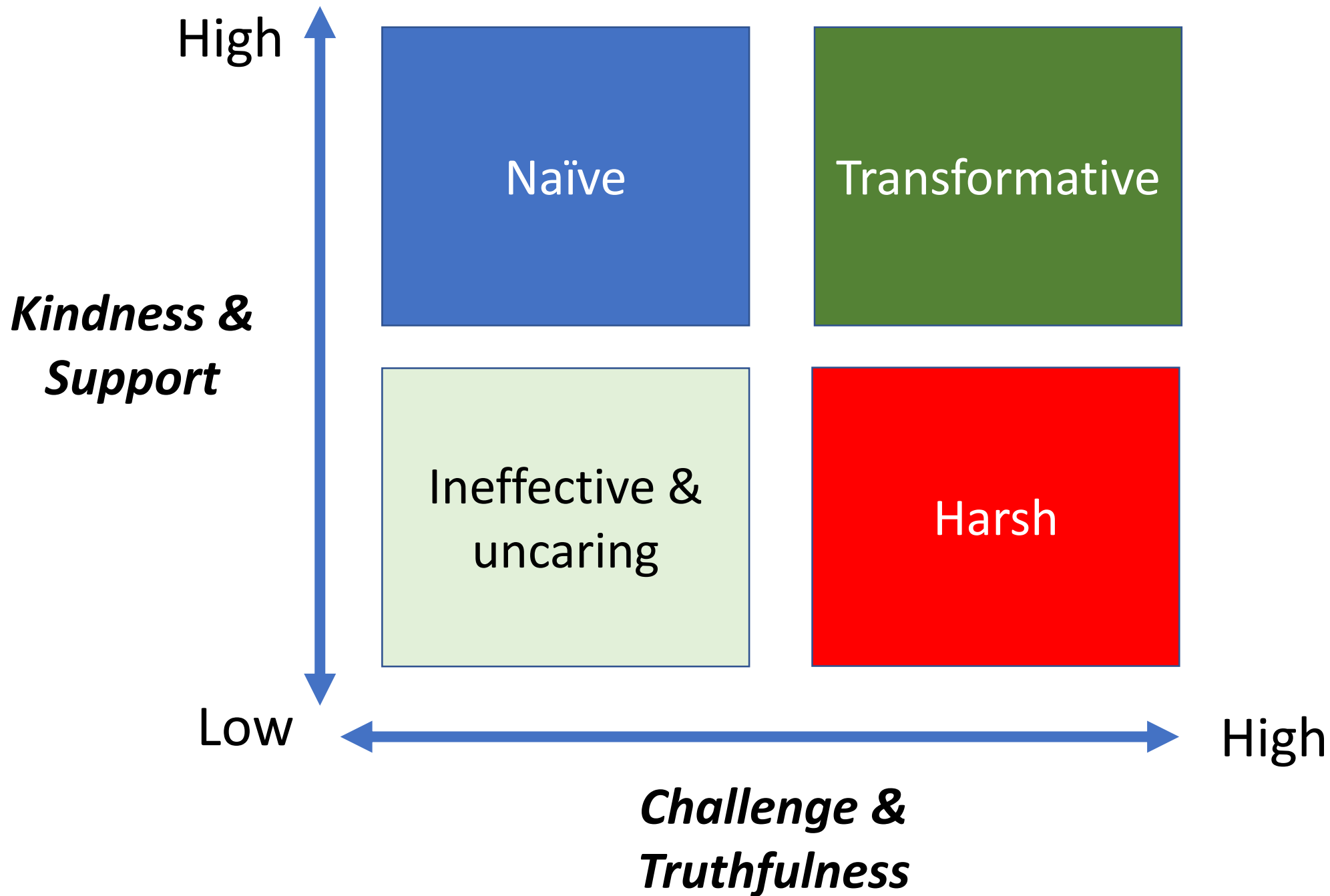
Ministry of Housing,  
Communities &  
Local Government



# 3. Focus on recovery



# 4. Avoid naivety

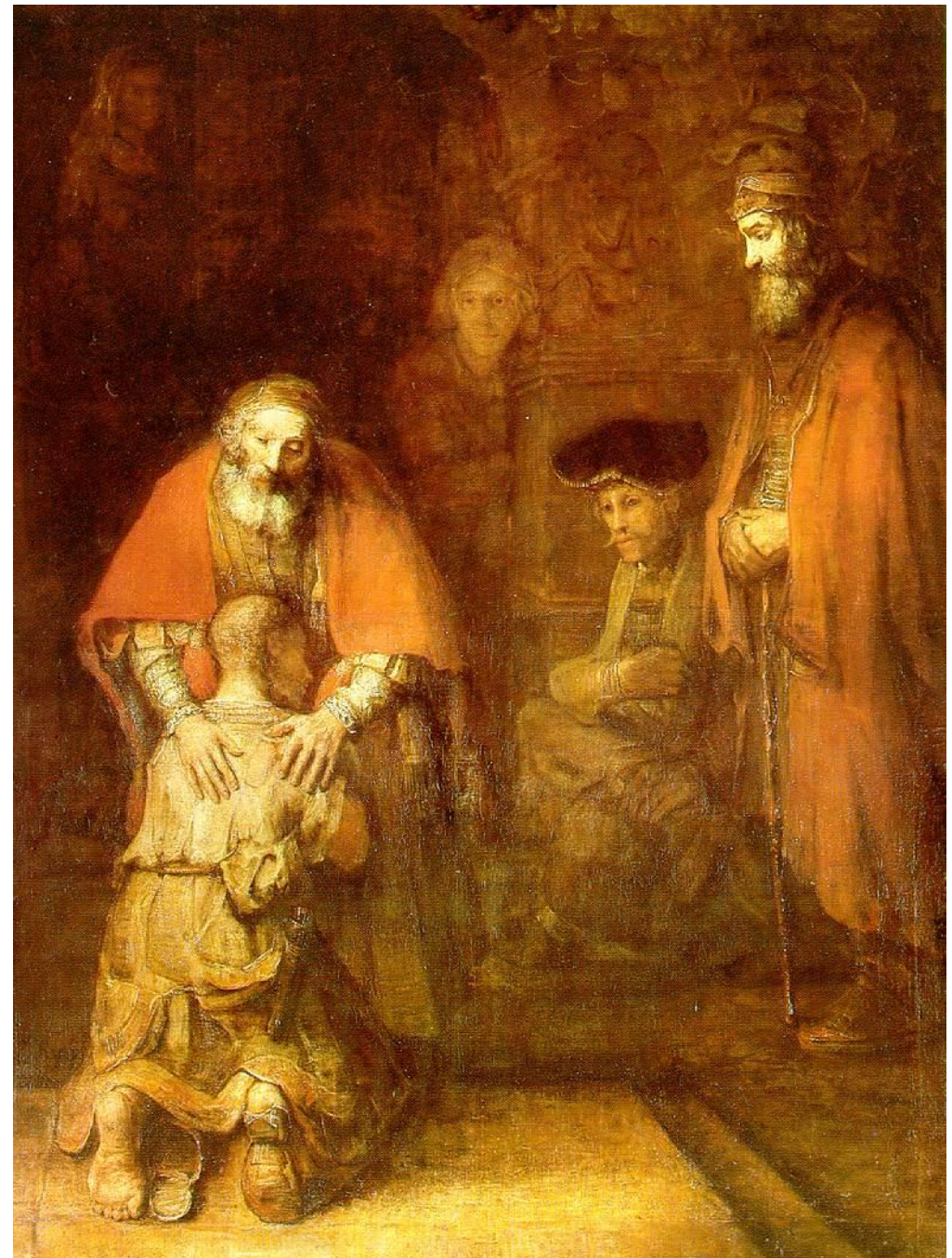


# Grace...

“But while he was still a long way off, his father saw him and was filled with compassion for him; he ran to his son, threw his arms around him and kissed him.”

## ...and truth

“When he came to his senses, he said, ‘How many of my father’s hired servants have food to spare, and here I am starving to death! I will set out and go back to my father and say to him: Father, I have sinned against heaven and against you...’ So he got up and went to his father.”



## ***Emphasis on grace***

Unconditional acceptance

Giving another chance

Showing compassion

Providing support and care

Advocating for people's rights

Treated as a guest

Hospitality

'Yes'

## ***Emphasis on truth***

Enforcement of rules

Maintaining boundaries

Administering justice

Challenging and empowering

Focus on personal responsibility

Treated as a client

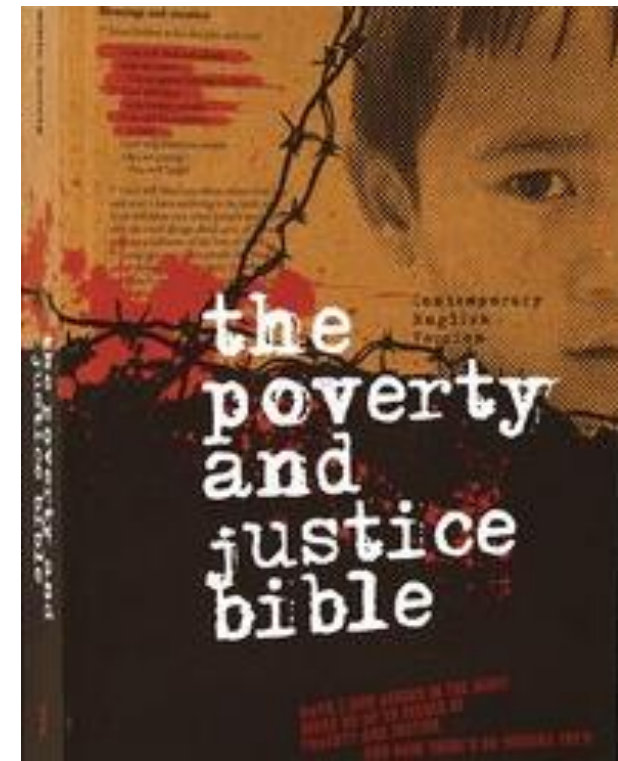
Assessment

'No'



# 5. The relevance of faith & spirituality

- Every person's fundamental worth
- Justice and compassion
- Welcome and hospitality
- The homeless Christ
- The basis of God's judgement
- Grace, truth and redemption



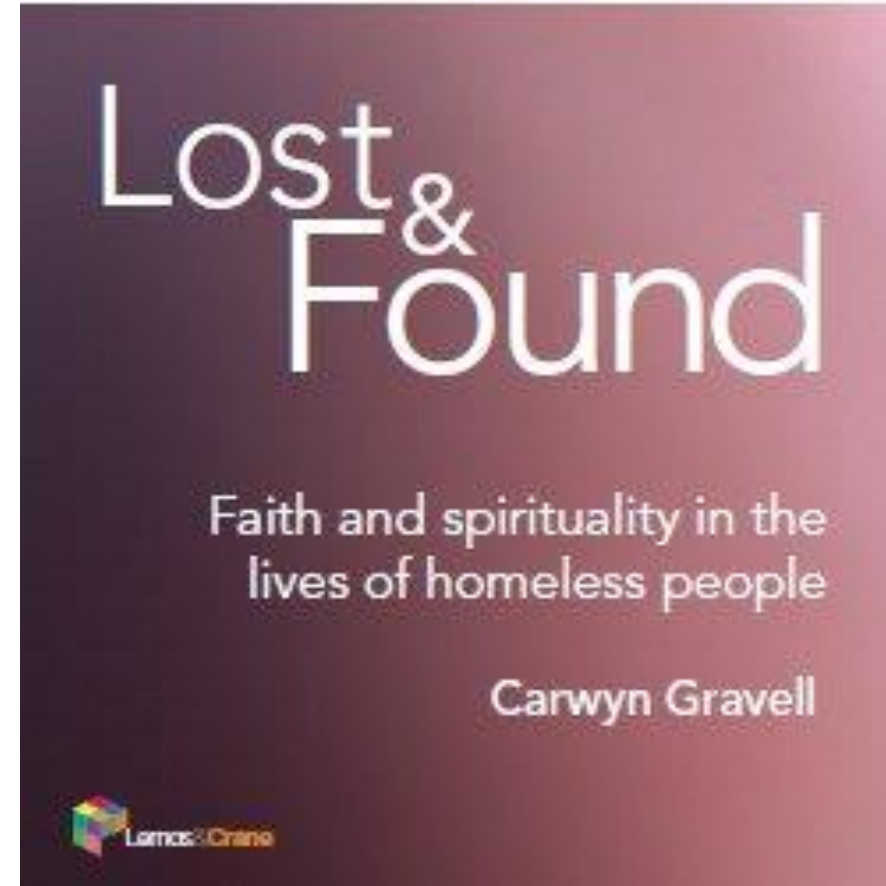
using,  
&  
ment



# ‘Hope and purpose’

“For homeless people, religious belief, practice and doctrine can help them come to terms with a past that is often characterised by profound emotional and material loss, enhance and give structure to the present where time hangs heavy for many, and create a purposeful future built on hope, fellowship and a sense of purpose.”

Carwyn Gravell, *Lost & Found*, 2013



Ministry of Housing,  
Communities &  
Local Government

# Key challenges

- People with 'No recourse to public funds' (NRPF)
  - The increasing complexity of need
  - Securing sustainable funding
  - Competitive commissioning
  - Lack of affordable accommodation
- 
- Social media
  - Translation / culture-clash / conflict between groups and LAs



# Summary

- 1) Organisational humility
- 2) Maintain a holistic perspective
- 3) Focus on recovery
- 4) Avoid naivety (grace and truth)
- 5) The relevance of faith and spirituality



# Homelessness: grace, truth and transformation

By Jon Kuhrt and Chris Ward  
£4.00 Via Grove Books

Blog: [www.gracetruth.blog](http://www.gracetruth.blog)

Email: [Jon.Kuhrt@communities.gov.uk](mailto:Jon.Kuhrt@communities.gov.uk)



Ministry of Housing,  
Communities &  
Local Government

*Thank You*



Ministry of Housing,  
Communities &  
Local Government