

July 2024

# PROPERTY MATTERS

The Methodist Church 

Welcome to the July edition of Property Matters with a focus on property-related updates and guidance.

For the latest property guidance, please refer to the [Property pages](#).

[Meet the Property Support Team](#)

## We Need Your Valuable Feedback

To help us continue to deliver a newsletter relevant to your needs and interests, it will be greatly appreciated if you can spare a few minutes to give us some valuable feedback about different aspects of the Property Matters Newsletter.



[Please click here to complete the Feedback Form.](#)

The deadline for completing and returning the form is Friday 26 July 2024.

Thank you for participating in this survey.

## What Should We Do With Our Building

A [new short guide](#) has been produced to help Churches to think about the future of their buildings. The guide provides an overview of options for keeping a building open and also gives information about how Methodists can worship together as a Church without a building.

A short guide  
to your options

The Methodist Church 

It signposts to resources on the website and to people in the Connexional Team and TMCP who can advise on available options.

The earlier a Church starts thinking about the future, the more options they'll have, particularly if they want to keep their building open.

[Click here to to read and download the leaflet.](#)

## St David's Methodist Church Spick & Span club

Consider yourself to be handy? Want to be part of a social group? Then why not consider joining a Spick and Span Club? This is something that St David's Methodist Church, Craig Y Don, Llandudno has created. Not wanting to exclude any gender by creating a 'Man's shed', they named it the '**Spick and Span Club**' and welcome all to join in to do small jobs which don't require a tradesperson.



The purpose of the group isn't to tackle anything that requires professional certification, like electrical works etc. but includes simple repairs, such as re-varnishing, weeding, easing and repairing hinges etc.

It has been a surprising success with jobs being done in groups and in fellowship, with plenty of biscuits (a big draw apparently!). Everyone has gotten involved, including one of the 90 year old members who has just helped repaint the gates! Some of those involved are not regular church worshippers but enjoy the company and welcome at the church and so wish to offer their help.

The church is also spearheading eco activities, and has an established community garden with themed planters for Taste, Touch, Sight and Sound. The installation is used missionally and to engage with their local community.



For more information on the church, and their activities visit their [Facebook](#) site.

## Cool Spaces, Warm Buildings

As we approach the season of heatwaves, don't forget that your church especially if historic can offer to become a cool space to offer an indoor space for those who need to shelter from the sun, cool down and rest. [Check with your local authority](#) to see if are operating a registering process and offering guidance. Otherwise if you recognise a need, there is advice online on how to become a 'Cool Space'. [Click here to read an article in the Church times.](#)



## Does Your Church Need Funding To Complete a Project?

The National Churches Trust offers grants ranging from £500 to £50,000 for churches, chapels and meeting houses of any denomination across the UK. They target different types of projects, including maintenance, repairs and the installation of facilities. **The application deadline is 13 August 2024.**



[Click here to read FAQs](#) covering useful information about the grants, how to apply and what to expect during the application process and further detailed information can be found below:

Medium Grants are available for urgent repairs and maintenance issues and project development. [Click here for more information.](#)

Cherish Grants available for projects in Scotland, Wales and North West England (Cumbria, Lancashire & Greater Manchester). [Click here for more information.](#)

## Trinity Methodist Church's Community Hub Grand Opening

After months of prepping and planning, [Trinity Methodist Church](#), in Clitheroe, marked the grand opening of its £1 million community hub with an 'Ark Experience' extravaganza.

The church space was packed full of animals of every shape and size, all handmade, and all in a pair! In the run-up to a weekend of celebrations, the sanctuary welcomed schools, a toddler group, Abbeyfield sheltered housing and the Ukrainian homework group. Set around the story of Noah's Ark, visitors explored seven stations where they could engage in activities that addressed questions such as 'how we look after the world'. Every volunteer and visitor to Trinity was encouraged to add a piece to a giant mosaic, aptly named the Tree of Life, to reflect what the hub means to local people.



Even the mayoralty came in two by two as both Ribble Valley Mayor, Louise Edge, and Clitheroe Mayor, Donna O'Rourke, attended the weekend event with their consorts.



[Click here to read more about the grand opening.](#)

## Methodist Insurance Updates

### Striving for a green future

If you manage a church, tackling climate change can mean an overwhelming list of things to consider.

In this short guide, we highlight some key factors relating to the common changes you can make to achieve a greener church.

[Green churches made simple](#)



### **Webinar: Everything you need to know about applying to Benefact Trust**

Benefact Trust awards grants to churches and Christian charities across the UK and Ireland. On **Tuesday 16th July, 11am-12pm**, they'll be holding a webinar to run through their grants programme (including their Methodist Grants programme funded by donations from Methodist Insurance) and provide advice for those looking to make an application.

Led by Andrew Bass (Senior Grants Officer), the session will offer you the information you need to make the most of your application, giving your organisation the best chance of securing funding.

[Register your interest here](#)

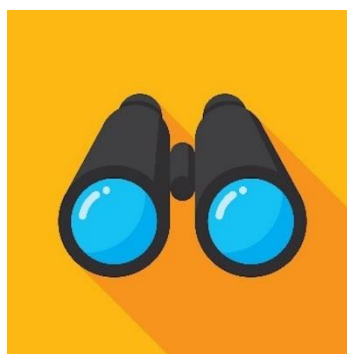


### **See who is funding churches**

See our list of funders that provide grants to churches and church projects.

Find your best match and use our fundraising tools to write your grant application.

[List of grant funders for churches | Fundraising | Methodist Insurance](#)



### **Safety when working at height**

Hanging bunting, gardening or doing a spot of maintenance?

Falls can cause serious injury. Where tasks require height, make sure you check they can be carried out safely, using proper equipment and competent people.

[Working at height](#)





### **Securing sheds and outbuildings**

Methodist home insurance covers up to £5,000 for contents kept in your sheds and outbuildings, but it is important they are secure.

Use our top 10 tips to keep it all safe. Some of these tips can also be used if your church has a shed or outbuilding.

[Shed security | Risk Management \(methodist-insurance.co.uk\)](https://methodist-insurance.co.uk)



### **The Methodist Conference 2024**

We enjoyed meeting everyone at the recent 2024 Conference held at the Royal Armouries Museum in Leeds. We were particularly delighted to hear first-hand the experiences from visitors to our stand, who shared with us the positive difference

[Benefact Trust's Methodist Grants programme](#) has made in helping to support the Methodist Church within their own local church community. We look forward to seeing you all again at next year's event.



### **Fire Risk Assessment**

Churches are required to undertake a Fire Risk Assessment by law!

[Use our template to get started](#)



**METHODIST INSURANCE**

**HOME INSURANCE CAN COUNT FOR MORE THAN JUST COVER.**

**20%\* DONATED TO YOUR CHOSEN CHURCH OR CHARITY**

\* Terms and conditions apply. Full details available on our website [methodistinsurance.co.uk/charitydonation](https://methodistinsurance.co.uk/charitydonation)

The advertisement features a woman with dark curly hair sitting on a grey sofa, smiling and looking at her smartphone. The background is a bright, modern living room with large windows. The text is overlaid on the image in various colors and sizes.

**Methodist Insurance PLC (MIC) Reg. No. 6369. Registered in England at Benefact House, 2000 Pioneer Avenue, Gloucester Business Park, Brockworth, Gloucester, GL3 4AW, United Kingdom.**

**MIC is authorised by the Prudential Regulation Authority and regulated by the Financial Conduct Authority and the Prudential Regulation Authority. Firm Reference Number 136423.**

## **Building Sustainable Futures for Scottish Churches**

This event is for everyone who helps to care for a place of worship or former place of worship in community use in Scotland. Visit Paisley Abbey to chat with funders and advisers all under one roof. They are there to help support all aspects of the work within your church building, whether it is from community, heritage, faith, tourism, or climate action sectors. Whether you are a congregation looking to repair a roof or to expand your community outreach; or a community organisation considering how to prepare a business plan and get advice on which insurance you will need, there will be someone there to help.

[Click here to learn more.](#)



## **TMCP Updates**

### **TMCP Welcomes HCR**

TMCP welcomes HCR onto the Methodist panel of Solicitors. HCR joins Anthony Collins, Blake Morgan and Sintons on the panel and, together with their fellow panel firms, they are here to assist you.

[Click here to read the whole update.](#)



### **Panel Solicitors - Here to Help**

Many of you will already be familiar with the Methodist Panel of Solicitors, a panel introduced by the Methodist Church in 2018 to act for Managing Trustees in legal matters and provide advice (the Panel). The level of support provided to Managing

Trustees by the Panel is reviewed regularly, and a further tender process took place in 2023. Following the re-tender process we are pleased to confirm that there are now four firms on the Panel. [Click here to read the whole update.](#)

## Net Zero Corner - Celebrating Bees and Straw Bales at Cathedrals

Here are a couple of interesting environmental initiatives across the ecumenical community.

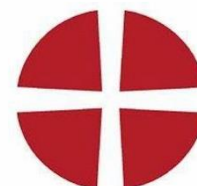
Thousands of bees live on the roof of Manchester Cathedral, (pictured with Revd Canon Grace Thomas, helping to green the city and providing a healthy eco-system. [Click here to watch a video.](#)



A sculpture of Ely Cathedral made from straw bales has been created by a club for young farmers. [Click here to view.](#)

## Help Us Develop the Resource Hub

Members of the Digital Team and the developers of the Methodist website are running a focus group with users of the [Resource Hub](#). The purpose is to get the views of users, and make sure that after the next stage of development the Resource Hub will meet their needs in the best way possible.



The focus group will be held on Zoom on **Tuesday 16 July 10.00-11.30 am**. If you are interested in attending the Resource Hub focus group, [click here to send an email](#). *Please note that places are limited.*



## Further Grant Opportunities

### Bupa Foundation Green Community grants

**Deadline: 30th July**

Schools and community groups can apply for up to £2,000 to improve local green spaces. The Bupa Foundation and Groundwork want to fund practical projects which benefit both people and planet health. [Click here to learn more.](#)



### The Radcliffe Trust Heritage & Crafts grants

**Next deadline: 31st July**

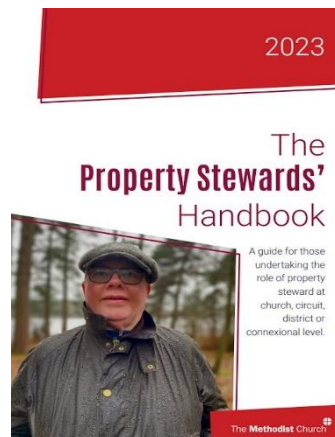
The Radcliffe Trust supports the development and practice of the skills, knowledge and experience that underpin the UK's heritage and crafts sector. This includes support for emerging craftspeople of high quality, craft and conservation projects and training, projects demonstrating creative outcomes by designer-makers, projects with potential for capacity building within the sector, and some special needs projects focusing on the therapeutic benefits of skills development.

[Click here to learn more.](#)

## Property Stewards' Handbook

Just a reminder that the Property Steward's Handbook is packed with lots of valuable information including the Top 10 Essentials of being a property steward as well as other useful links.

[Click here to download a copy.](#)



### Listed Building Advisory Committee (LBAC)

**Meeting Dates:**

- **8 October 2024** - Deadline for papers is 1 October 2024
- **21 January 2025** - Deadline for papers is 31 December 2024
- **29 April 2025** - Deadline for papers is 8 April 2025

## A Gentle Reminder For Your Valuable Feedback

Don't forget that the deadline for the completion and return of your **Property Matters Newsletter Feedback Form** is **Friday 26 July 2024**.

[Please click here to complete the Feedback Form.](#)



Thank you once again for participating in this survey.

### Supporting the Methodist Connexion

Methodist Insurance has been protecting the property of the Methodist Church since 1872. We are a Public Limited Company owned by shareholders and independent of the Methodist Church. The company operates like a mutual by returning most of our profits back to our community in the form of a significant financial contribution to the Methodist Connexion. [Find out more.](#)



**Property Matters** is a monthly newsletter focused on giving updates on property related guidance and legalisation as well as providing information and links to related subjects. To view the most current content, please refer to the [Property pages](#) on the website. We cannot know about everything that's going on, so please do [email us](#) if you have any feedback or ideas for items to include.

Methodist Church House, 25 Tavistock Place Road, London, WC1H 9SF 020 7486 5502  
[methodist.org.uk](http://methodist.org.uk)  
Registered charity no. 1132208

[Unsubscribe](#)  
[Subscribe to other newsletters](#)  
[Change your details](#)  
[Click here for a PDF version](#)

