

August 2024

PROPERTY MATTERS

The Methodist Church

Welcome to the August edition of Property Matters with a focus on property-related updates, guidance, grants, training opportunities and inspirational stories.

For the latest property guidance, please refer to the [Property pages](#).
[Meet the Property Support Team](#)

Inspirational Stories from around the Connexion

Recycling & Fighting Food Waste

[Truro Methodist Church](#) is a strikingly beautiful building in the centre of Truro in the [Cornwall and Isles of Scilly Methodist District](#).

Originally known as St Mary's Wesleyan Chapel – the church is a Grade II listed building built in 1830, before being remodelled and refitted by Silvanus Trevail in the late nineteenth century.



Awarded a [A Rocha Eco Church Silver Award](#), Truro Methodist Church explores how to limit their carbon emissions in a building that cannot get to net zero emissions.

Click [here](#) to read the whole story.

Goostrey Methodist Church Hosts Sub-Post Office

[Goostrey Methodist Church](#) wanted to show God's love in action through loving and serving our neighbour. They thought it important to be church in community and respond to the communities need. They already engaged with the community through Messy Church and Christian Aid Lunches each year for Christian aid and other occasional events, as well as members being part of groups within the community. The members have been happy to try different things such as Bacon Butty Church. Reopening the Sub-Post Office was the next project.



Click [here](#) to read Revd Yvonne Pearson's article on how it all unfolded

St Marylebone - The Church With a GP Practice & Counselling Service

Churches are the beating hearts of communities, providing vital support to local people.

St Marylebone Parish Church in London is one unique place of worship as it is home to a GP Practice and a Counselling Service both of which operate from the Basement of the Church. Hosting these services have helped their church and community to thrive.

Click [here](#) to read how hosting these services have helped the Church and Community to thrive.



TMCP Updates

By special resolution the members of the 2024 Conference decided that memoranda of consent will no longer be executed on disposals of Methodist property in England and Wales. A memorandum of consent was previously executed on behalf of the Methodist Council under Model Trust 26 and provided to the buyer or tenant when a property was sold, let or otherwise disposed of.

[Click here to read more.](#)



Adapting Historic Buildings for Energy and Carbon Efficiency

Heritage has a massive part to play in achieving Net Zero. Keeping historic buildings in use, through sensitive repair, maintenance and adaptation, can help to reduce carbon emissions, reliance on fossil fuels, and energy costs.

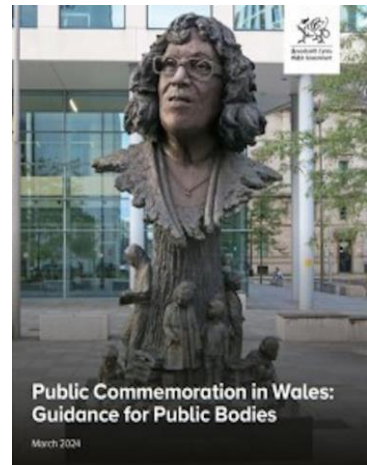


Historic England has issued a concise publication outlining ways in which historic buildings can be adapted for the purpose of making them more Energy and Carbon efficient. Click [here](#) to read the full publication.

Guidance on Public Commemoration Published

After a public consultation last year, the Welsh Government's Public Commemoration in Wales: Guidance for Public Bodies has now been published and is available to download from the [Welsh Government website](#).

The 38-page guidance is intended to help local authorities, town and community councils, and other public bodies reach well-informed decisions about existing and future public commemorations.



This will help them play their part in making Wales an anti-racist nation, and celebrate individuals from all parts of our society who have made an outstanding contribution to Welsh life. Whilst this is intended for public bodies in decision making, it may be relevant for understanding the considerations churches face when looking to remove or add any items of commemoration in our buildings, whether historic or not. [Click here to read the full guidance](#).

Courses offered by SPAB

Online lecture series on taking on for sale churches in Scotland

These talks continues the SPAB Scotland series investigating practical measures for those thinking about taking on a church for sale, whether privately or as part of a community group.

- **29 August** - Scotland's Churches: How to Care for Churchyards. [Click here to register](#).
- **5 September** - High Level Maintenance & Steeplejacking. [Click here to register](#).



Maintaining Welsh Churches

Are you involved in caring for a place of worship in Wales? In this free introductory course, on **2 October 2024 in Cardiff**, SPAB will explore the simple steps you can take to keep your building in good condition and reduce the likelihood of large

repair projects further down the line. You'll put your new knowledge into action right away, with a practical exercise looking at the host building inside and out to identify maintenance issues.

[Click here to register.](#)

Grants available for security measures

Protective Security Scheme For Places of Worship

In response to recent public disorder, the Home Office has introduced a rapid protective security response for places of worship at risk of imminent violent disorder or in the immediate aftermath of such an incident.

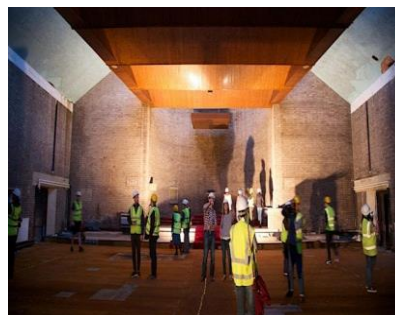
[Click here for full details on how to apply.](#)



A Future for Your Church: Working with an Architect

The Heritage Trust Network and Historic Churches Scotland are joining forces on **Wed, 4 September, 10am - 11:30am** to host the next online event in this series for any group contemplating the future of their church building. At this event, Jo Parry-Geddes of Mill Architects will present her guidance and top tips for upgrading and adapting church buildings for modern day and new uses.

[Click here to register.](#)



Heritage Open Days 2024: 6th-15th September

Every September thousands of volunteers across England organise events to celebrate our fantastic history and culture. It's your chance to see hidden places and try out new experiences, all of which are FREE to explore. Events are still being added to our directory every day, but there are already more than 2,000 events live to peruse. [Click here to learn more.](#)



Methodist Insurance Updates

Electricity at your Church

Electricity has the potential to cause considerable damage to property and serious personal injury. Check your electrical systems have been inspected by a qualified electrician within the last five years and all portable appliances have been tested.

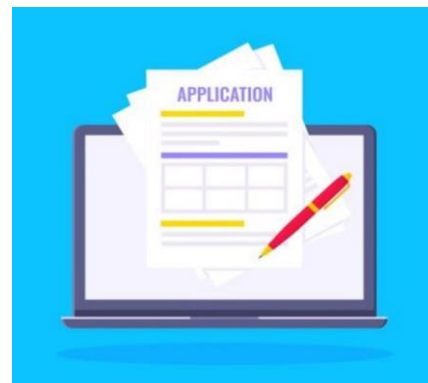
Click [here](#) for more information



Securing Funding via Grant Applications

Writing a grant application can be daunting. Our application checklist gives you tips on defining your case, implementing a plan and communicating it all to potential funders.

Click [here](#) for the application checklist



Student Contents Covered on your Home Insurance

If you have Methodist home insurance, your cover extends to students away at university. They will be covered for up to £5,000 of contents and you can learn more about what's included on our website.



Click [here](#) to learn more about home insurance

Protecting People on Church Premises

Liability insurance protects an individual, volunteer or organisation if they are held legally liable for personal injury or damage to third party property.

Your church insurance policy includes employers' liability which protects your greatest asset, your people. It is important that you check your church's insurance policy to make sure that you have adequate cover.

Click [here](#) to find out more



Benefact Trust's Methodist Grants

Programme awards grants to inspirational projects at the heart of the Methodist Church From Scotland to Cornwall, Wales to the West Midlands, Benefact Trust has awarded over £600,000 to inspirational projects in the latest round of Methodist Grants.



Benefact Trust's Methodist Grants programme – funded by donations from Methodist Insurance PLC – is helping Methodist organisations to enhance their mission and ministry. This latest round of grants is supporting methodist churches to provide vital support for their communities, including a redevelopment project which will support children with complex special needs, and an eco-friendly kitchen extension which – with the help of produce from the church's community garden

Click [here](#) to read more

Thank You For Your Feedback

Thank you all for taking time out to share your feedback about the Property Matters Newsletter. We had lots of positive feedback that will help shape the content of the newsletter going forward and we are grateful for your input.



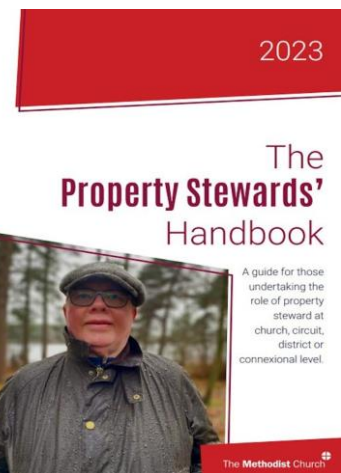
We are also pleased to know that most of our subscribers find this resource very helpful as expressed below -

***"This is one of the best resources in Methodism.
Thank you for all the work that goes into it"***
- anonymous

Property Stewards' Handbook

Remember the Property Stewards' Handbook is designed to be an across-the-board information resource for property stewards at a church, circuit and district level including the **Top 10 Essentials of being a Property Steward** as well as other useful information and links.

[Click here to download a copy.](#)



Listed Building Advisory Committee (LBAC)

Meeting Dates:

- **8 October 2024** - Deadline for paper is 1 October 2024
- **21 January 2025** - Deadline for paper is 31 December 2024
- **29 April 2025** - Deadline for paper is 8 April 2025

Supporting the Methodist Connexion

Methodist Insurance has been protecting the property of the Methodist Church since 1872. We are a Public Limited Company owned by shareholders and independent of the Methodist Church. The company operates like a mutual by returning most of our profits back to our community in the form of a significant financial contribution to the Methodist Connexion. [Find out more](#)



Property Matters is a monthly newsletter focused on giving updates on property related guidance and legalisation as well as providing information and links to related subjects. To view the most current content, please refer to the [Property pages](#) on the website. We cannot know about everything that's going on, so please do [email us](#) if you have any feedback or ideas for items to include.

Methodist Church House, 25 Tavistock Place Road, London, WC1H 9SF 020 7486 5502
methodist.org.uk
Registered charity no. 1132208

[Unsubscribe](#)

[Subscribe to other newsletters](#)

[Change your details](#)

[Click here for a PDF version](#)