

Chair of District for the West Midlands

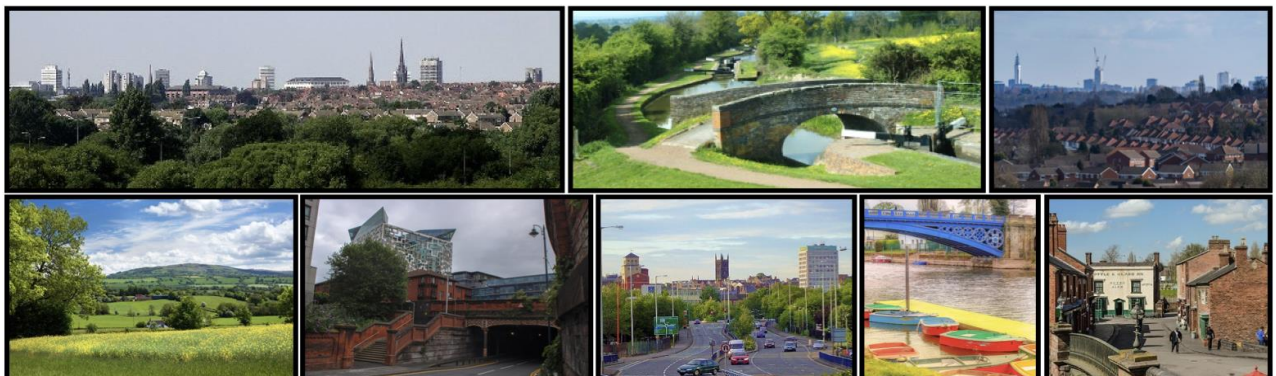
The new West Midlands Methodist District is being formed from the Wolverhampton and Shrewsbury and Birmingham Districts.

This presents an exciting opportunity for mission, creative new ideas and vision. The new West Midlands District needs someone who can lead a team taking the best practice from each of the existing districts, good practice and innovations from elsewhere along with imaginative ideas.

Someone who

- can think creatively and strategically yet works collaboratively
- flourishes in new situations or uncharted territory and able to unite the diversity within a very varied district
- is pastorally sensitive and approachable and knows how to listen
- has a proven commitment to JDS
- can take difficult decisions

The new district is looking to appoint a presbyter for an initial period of six years from 1st September 2025.



The District Statement and other relevant papers can be obtained (either as hard copy or as email attachments, or as downloadable files from our website) from:

The Secretary of the Conference,
Methodist Church House, 25 Tavistock Place London, WC1H 9SF.
Telephone: 020 7486 5502
E-mail: recruitment@methodistchurch.org.uk
Website: <https://www.methodist.org.uk/about/jobs-volunteering/>

*Expressions of interest and/or nominations to be sent to the Secretary of Conference at Methodist Church House by **noon on 4th October***

Interviews to be held on 22nd October in central Birmingham

